

DAMAC

CHIC

TOWER

de GRISOGONO

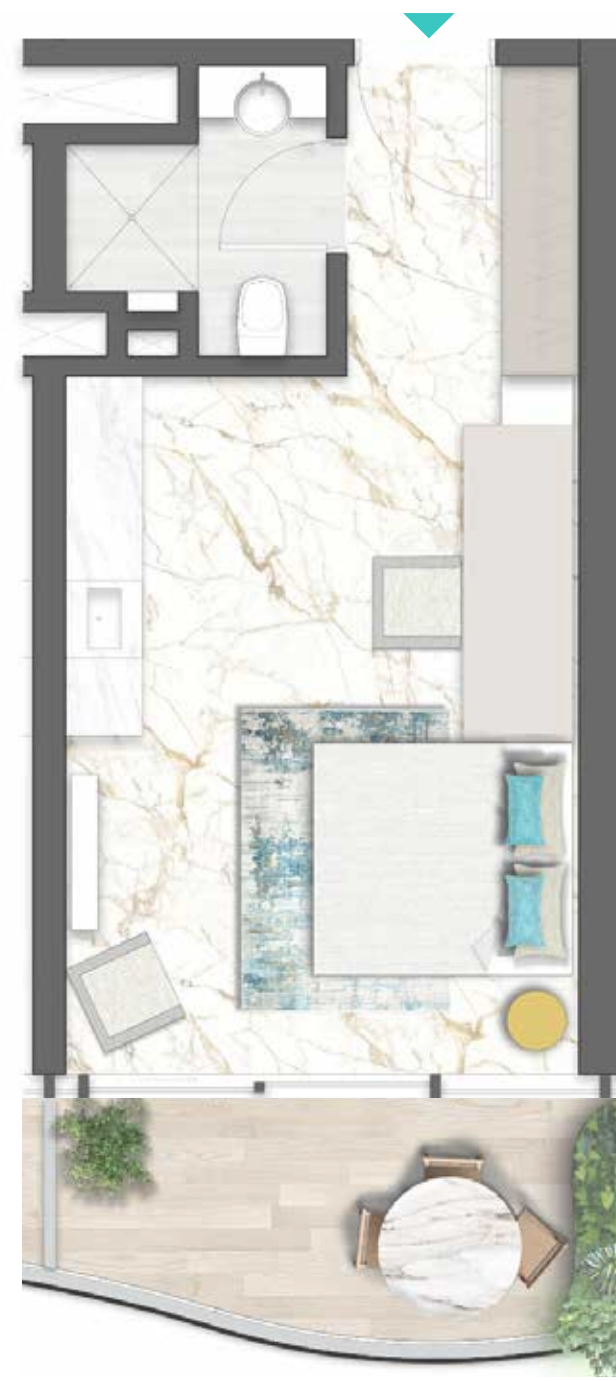
GENEVE

F L O O R P L A N S





TYPE 01 | BALCONY 03
LEVELS: 02, 06, 10, 14, 18, 22, 26, 30



TYPE 01 | BALCONY 18
LEVELS: 03, 05, 07, 09, 11, 13,
17, 19, 21, 23, 25, 27, 29, 31



TYPE 01 | BALCONY 33
LEVELS: 04, 08, 12, 20, 24, 28, 32



TYPE 01 | BALCONY 04
LEVELS: 02, 06, 10, 14, 18, 22, 26, 30





TYPE 01 | BALCONY 19
LEVELS: 03, 05, 07, 09, 11, 13, 17,
19, 21, 23, 25, 27, 29, 31



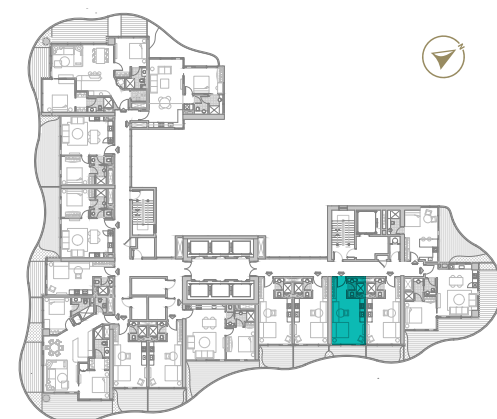
TYPE 01 | BALCONY 34
LEVELS: 04, 08, 12, 20, 24, 28, 32



TYPE 01 | BALCONY 05
LEVELS: 02, 06, 10, 14, 18, 22, 26, 30



TYPE 01 | BALCONY 20
LEVELS: 03, 05, 07, 09, 11, 13,
17, 19, 21, 23, 25, 27, 29, 31





TYPE 01 | BALCONY 35
LEVELS: 04, 08, 12, 20, 24, 28, 32



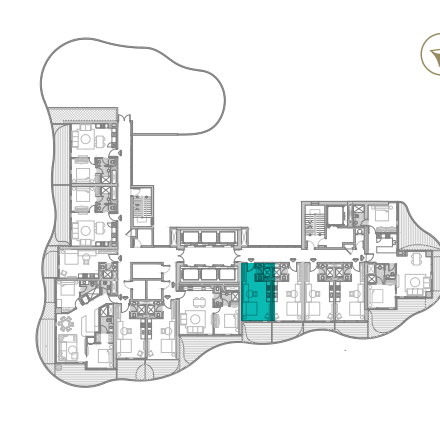
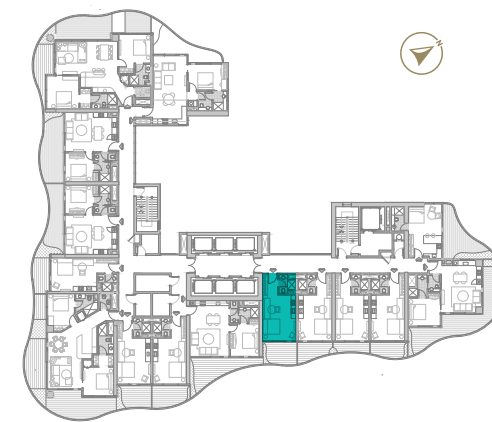
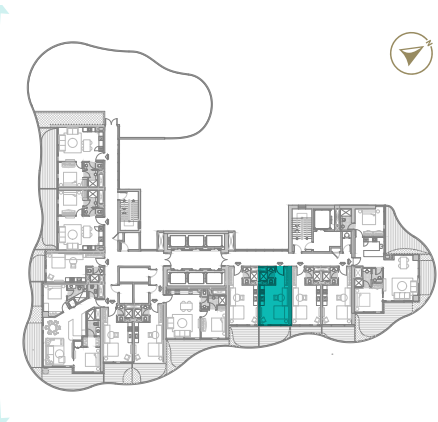
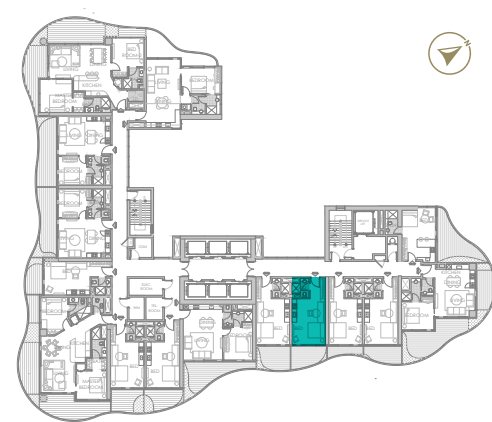
TYPE 01 | BALCONY 06
LEVELS: 02, 06, 10, 14, 18, 22, 26, 30



TYPE 01 | BALCONY 21
LEVELS: 03, 05, 07, 09, 11, 13, 17,
19, 21, 23, 25, 27, 29, 31



TYPE 01 | BALCONY 36
LEVELS: 04, 08, 12, 20, 24, 28, 32





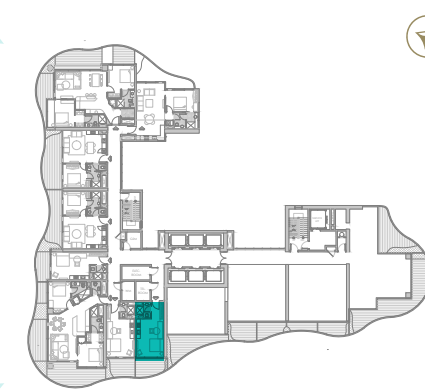
TYPE 01 | BALCONY 08
LEVELS: 02, 06, 10, 14, 18, 22, 26, 30



TYPE 01 | BALCONY 23
LEVELS: 03, 05, 07, 09, 11, 13, 15,
17, 19, 21, 23, 25, 27, 29, 31



TYPE 01 | BALCONY 38
LEVELS: 04, 08, 12, 16, 20, 24, 28, 32





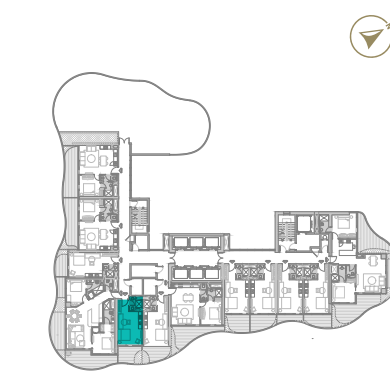
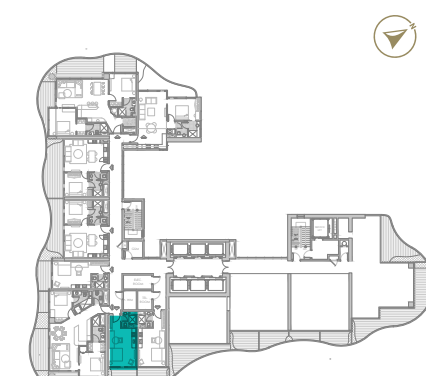
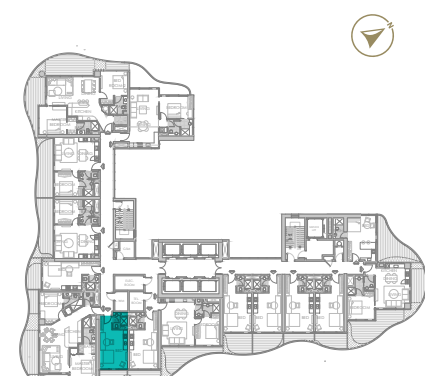
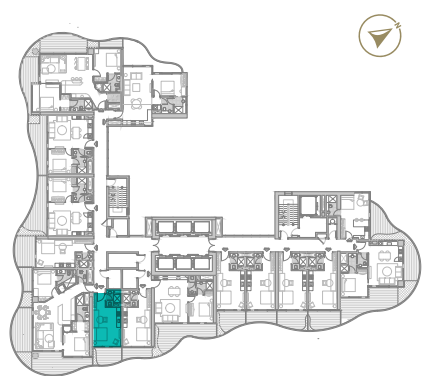
TYPE 02 | BALCONY 09
LEVELS: 02, 06, 10, 14, 18, 22, 26, 30



TYPE 02 | BALCONY 24
LEVELS: 03, 05, 07, 09, 11, 13, 15,
17, 19, 21, 23, 25, 27, 29, 31



TYPE 02 | BALCONY 39
LEVELS: 04, 08, 12, 16, 20, 24, 28, 32





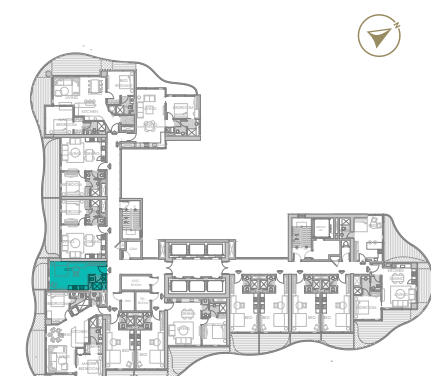
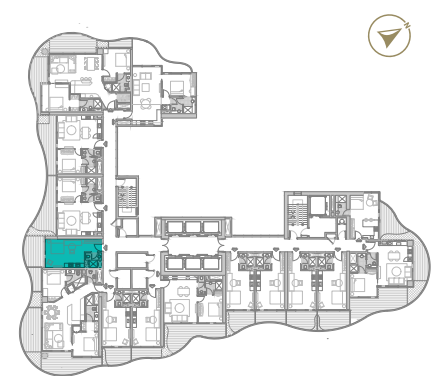
TYPE 03 | BALCONY 11
LEVELS: 02, 06, 10, 14, 18, 22, 26, 30



TYPE 03 | BALCONY 26
LEVELS: 03, 05, 07, 09, 11, 13, 15,
17, 19, 21, 23, 25, 27, 29, 31



TYPE 03 | BALCONY 41
LEVELS: 04, 08, 12, 16, 20, 24, 28, 32





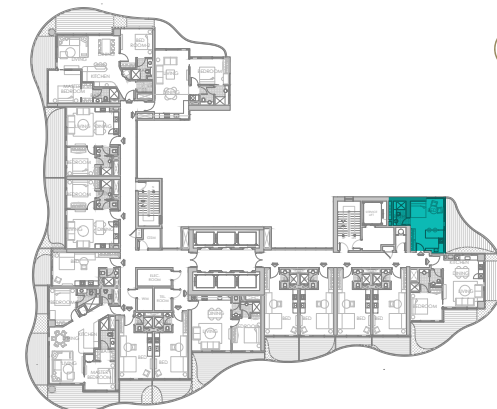
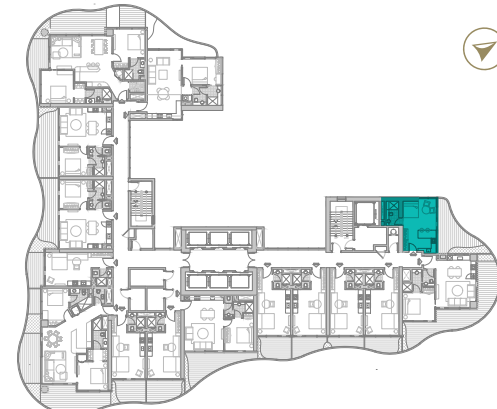
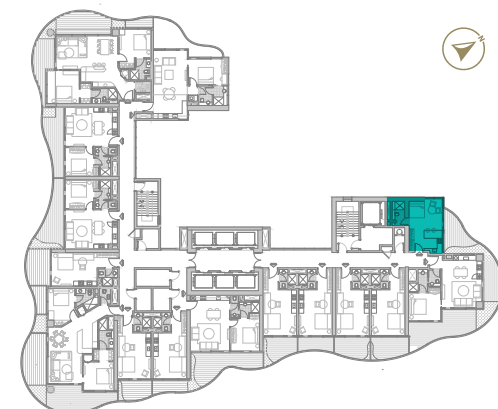
TYPE 04 | BALCONY 01
LEVELS: 02, 06, 10, 14



TYPE 04 | BALCONY 16
LEVELS: 03, 05, 07, 09, 11, 13



TYPE 04 | BALCONY 31
LEVELS: 04, 08, 12



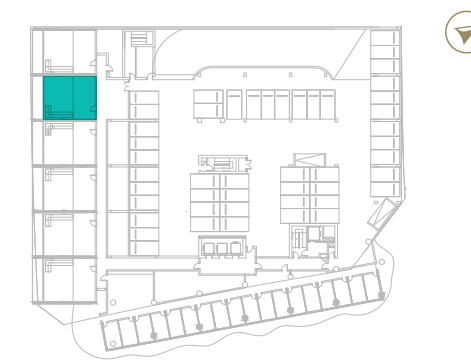
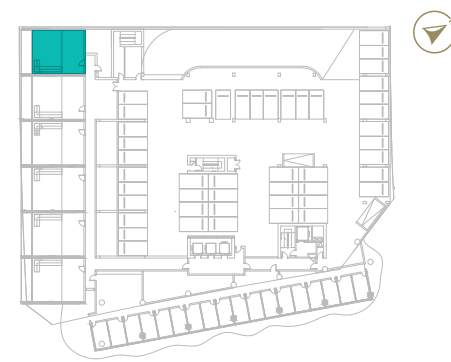
1 BEDROOM

LOFT



LOFT | BALCONY 01
LEVELS: P4 & P5

LOFT | BALCONY 02
LEVELS: P4 & P5



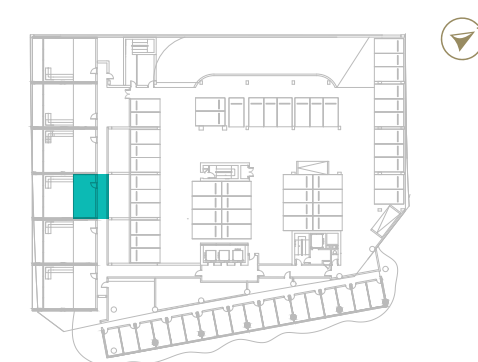
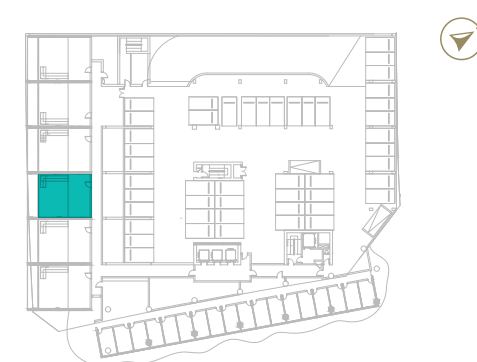
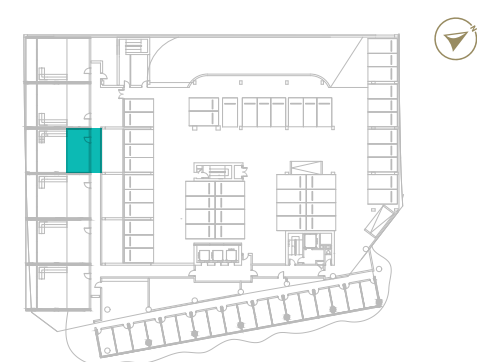
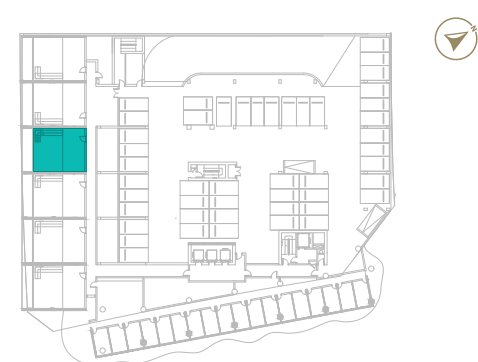
1 BEDROOM

LOFT



LOFT | BALCONY 03
LEVELS: P4 & P5

LOFT | BALCONY 04
LEVELS: P4 & P5

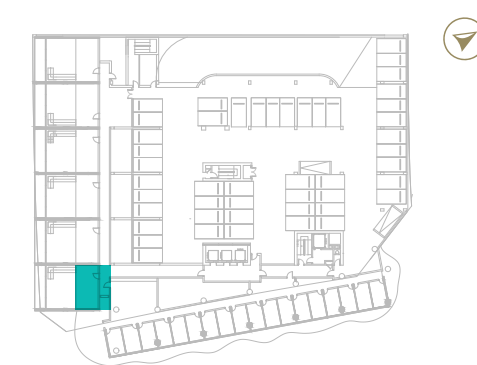
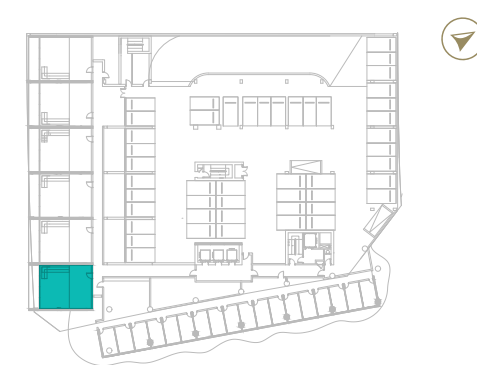
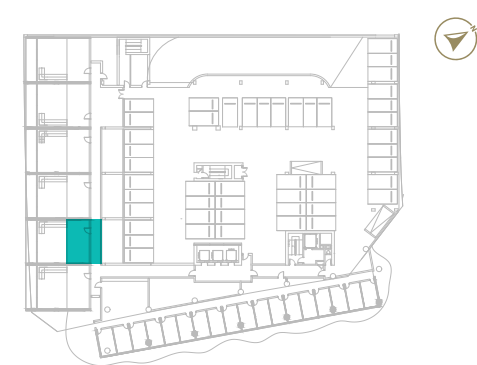
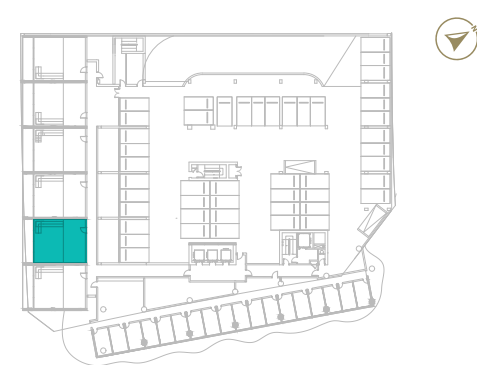




LOFT | BALCONY 05
LEVELS: P4 & P5



LOFT | BALCONY 06
LEVELS: P4 & P5



1 BEDROOM

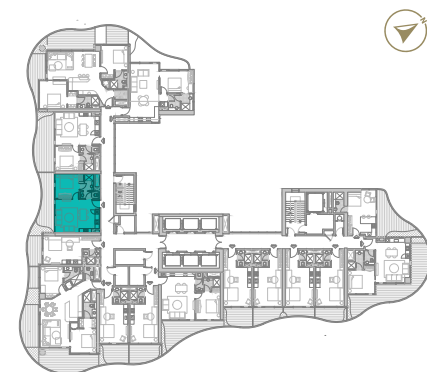
TYPE 01



TYPE 01 | BALCONY 12
LEVELS: 02, 06, 10, 14, 18, 22, 26, 30



TYPE 01 | BALCONY 27
LEVELS: 03, 05, 07, 09, 11, 13, 15,
17, 19, 21, 23, 25, 27, 29, 31



1 BEDROOM

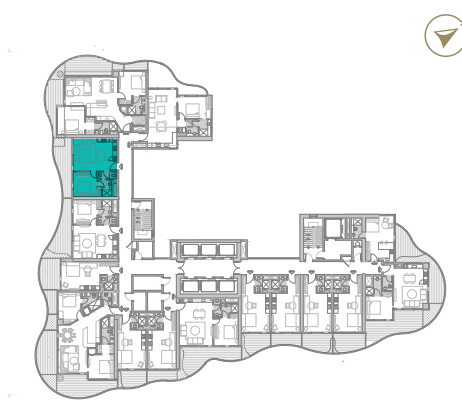
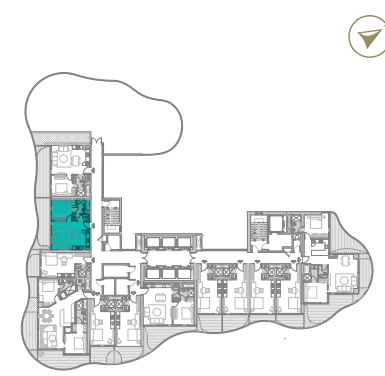
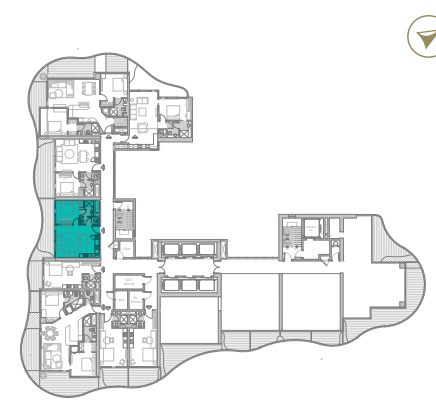
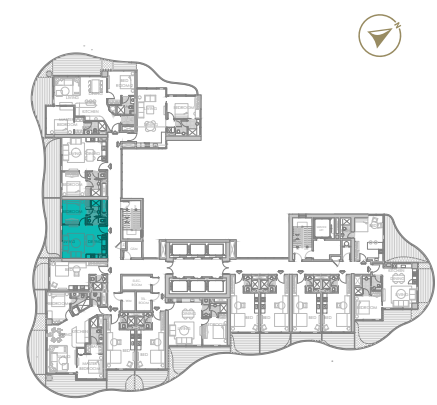
TYPE 01



TYPE 01 | BALCONY 42
LEVELS: 04, 08, 12, 16, 20, 24, 28, 32



TYPE 01 | BALCONY 13
LEVELS: 02, 06, 10, 14, 18, 22, 26, 30



1 BEDROOM

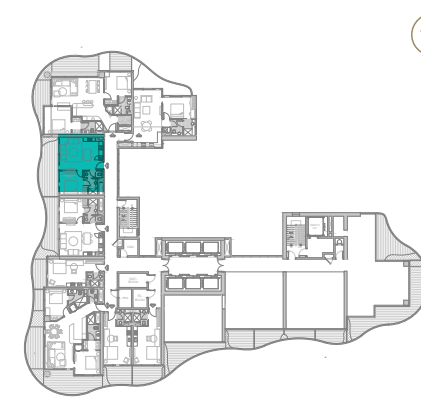
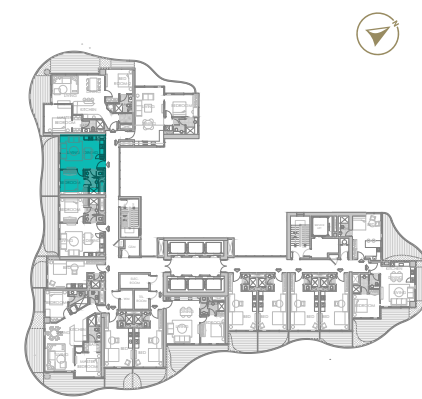
TYPE 01



TYPE 01 | BALCONY 28
LEVELS: 03, 05, 07, 09, 11, 13, 15,
17, 19, 21, 23, 25, 27, 29, 31

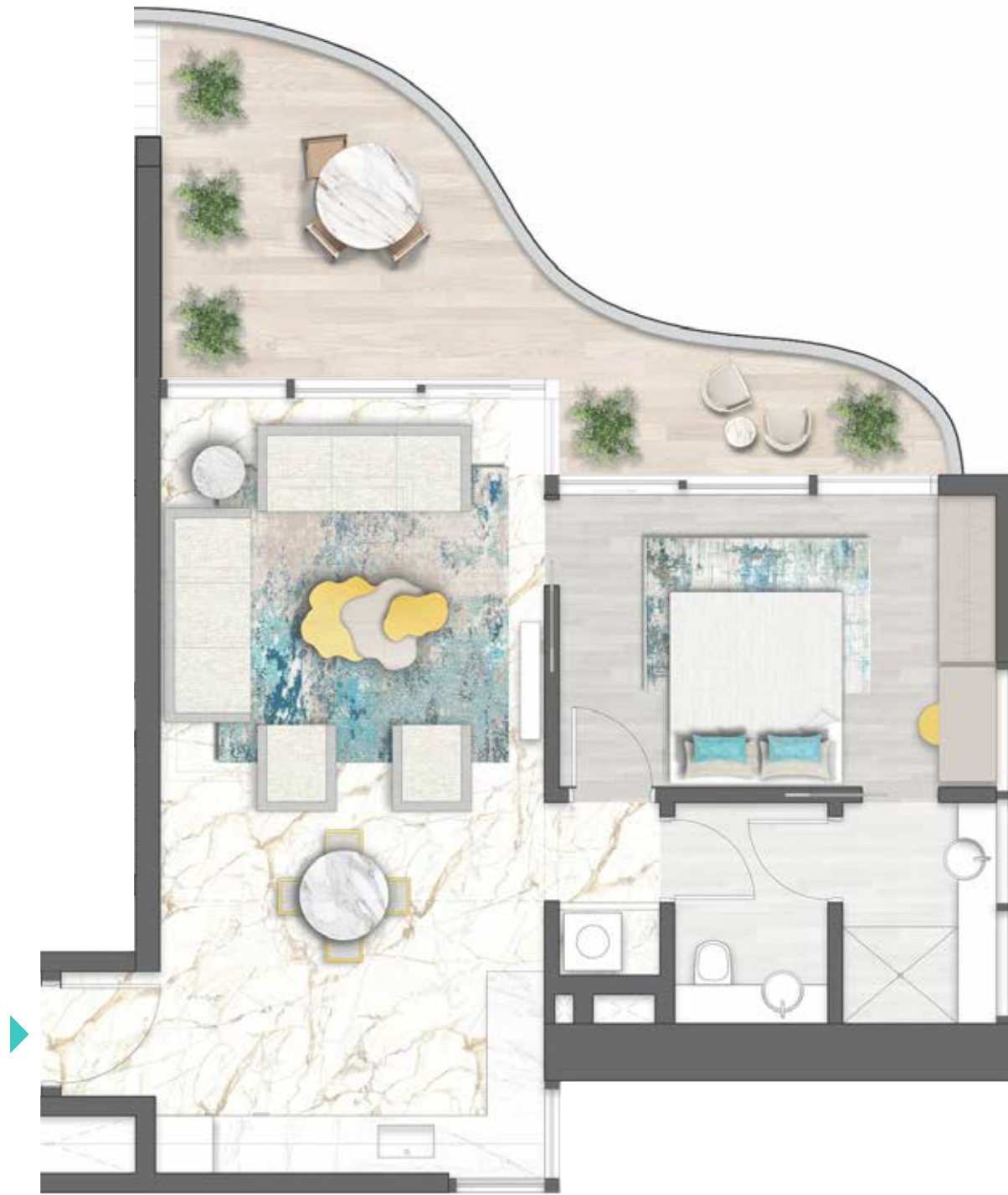


TYPE 01 | BALCONY 43
LEVELS: 04, 08, 12, 16, 20, 24, 28, 32

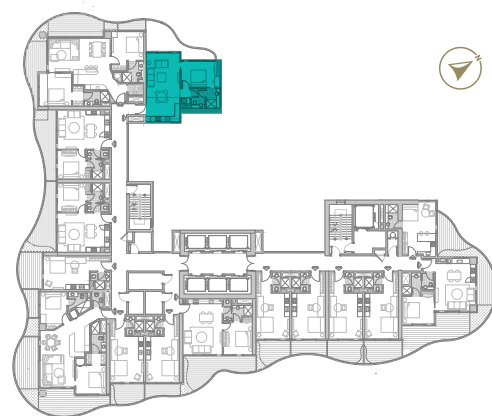


1 BEDROOM

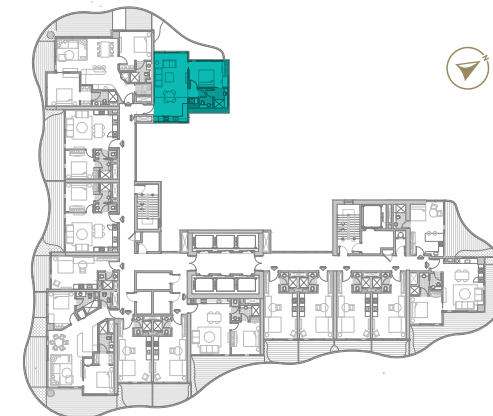
TYPE 02



TYPE 02 | BALCONY 15
LEVELS: 02, 06, 10, 14, 18, 22, 26, 30



TYPE 02 | BALCONY 30
LEVELS: 03, 05, 07, 09, 11, 13, 15,
17, 19, 21, 23, 25, 27, 29, 31

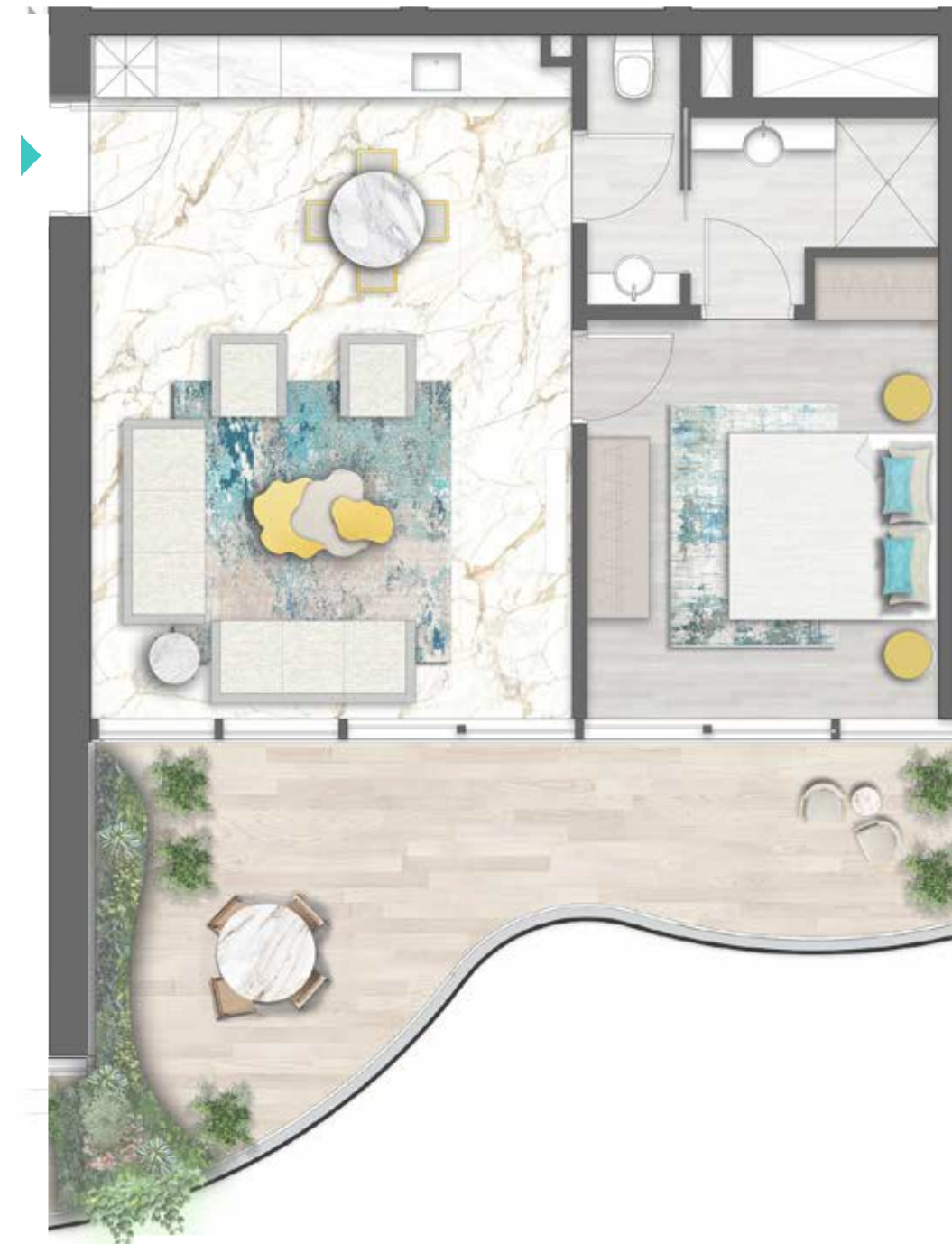


1 BEDROOM
TYPE 02

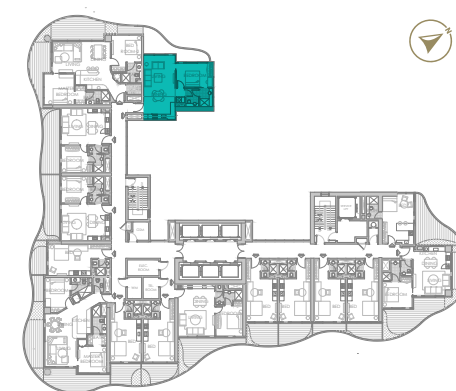


TYPE 02 | BALCONY 45
LEVELS: 04, 08, 12, 16, 20, 24, 28

1 BEDROOM
TYPE 03



TYPE 03 | BALCONY 07
LEVELS: 02, 06, 10, 14, 18, 22, 26, 30



1 BEDROOM

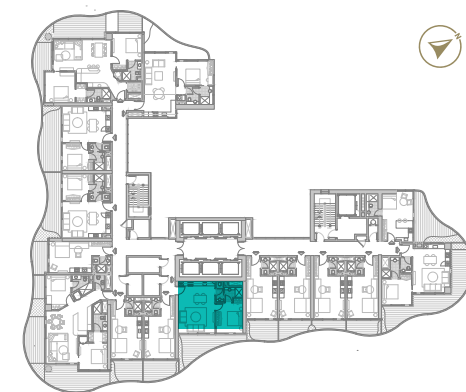
TYPE 03



TYPE 03 | BALCONY 22
LEVELS: 03, 05, 07, 09, 11, 13,
17, 19, 21, 23, 25, 27, 29, 31



TYPE 03 | BALCONY 37
LEVELS: 04, 08, 12, 20, 24, 28, 32



1 BEDROOM

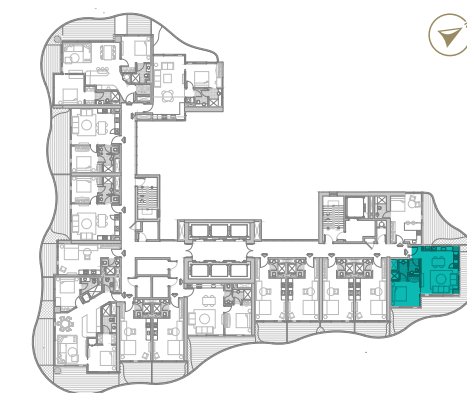
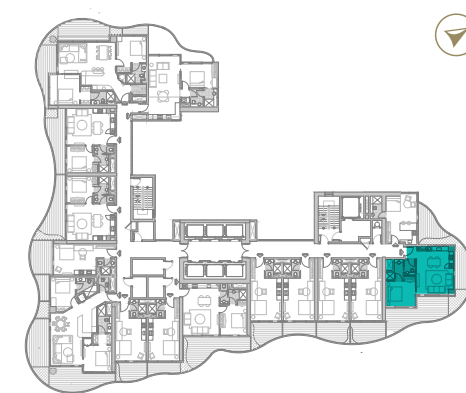
TYPE 04



TYPE 04 | BALCONY 02
LEVELS: 02, 06, 10, 14



TYPE 04 | BALCONY 17
LEVELS: 03, 05, 07, 09, 11, 13



1 BEDROOM
TYPE 04

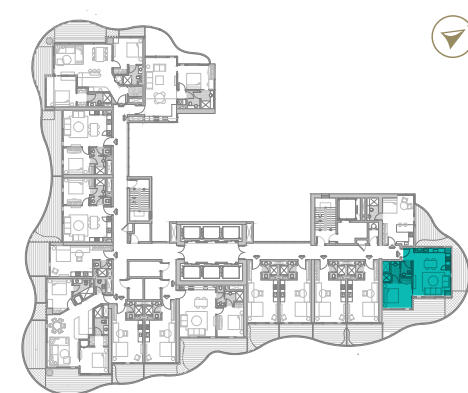
1 BEDROOM
TYPE 04



TYPE 04 | BALCONY 32
LEVELS: 04, 08, 12



TYPE 01 | BALCONY 14
LEVELS: 02, 06, 10, 14, 18, 22, 26, 30



2 BEDROOM

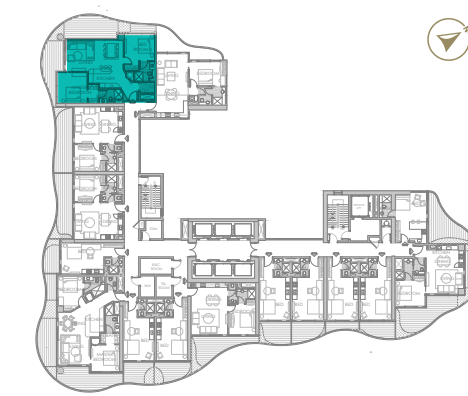
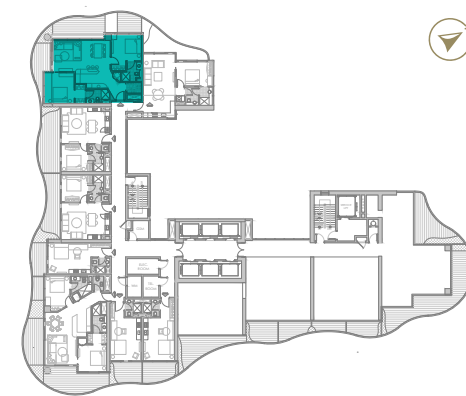
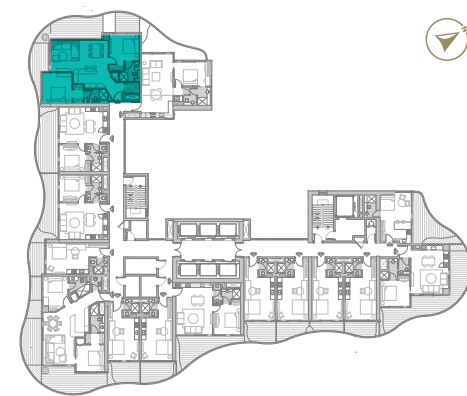
TYPE 01



TYPE 01 | BALCONY 29
LEVELS: 03, 05, 07, 09, 11, 13, 15,
17, 19, 21, 23, 25, 27, 29, 31



TYPE 01 | BALCONY 44
LEVELS: 04, 08, 12, 16, 20, 24, 28



2 BEDROOM

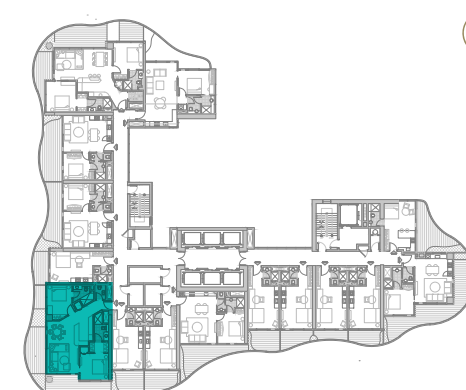
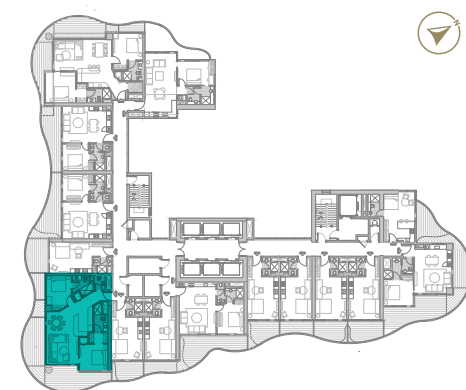
TYPE 02



TYPE 02 | BALCONY 10
LEVELS: 02, 06, 10, 14, 18, 22, 26, 30



TYPE 02 | BALCONY 35
LEVELS: 03, 05, 07, 09, 11, 13, 15,
17, 19, 21, 23, 25, 27, 29, 31



2 BEDROOM
TYPE 02

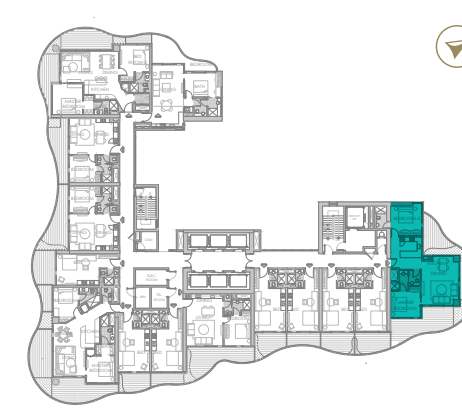
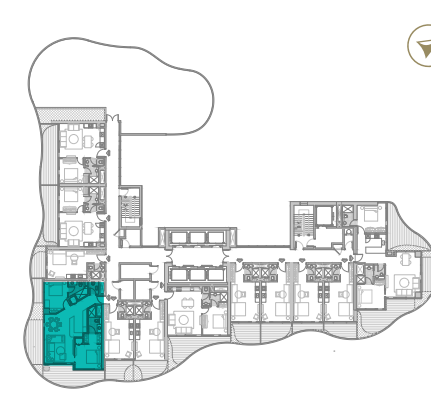
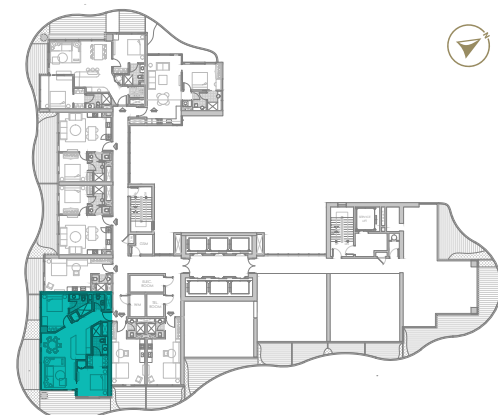
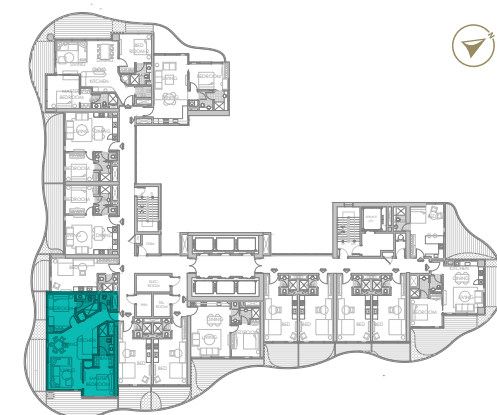


TYPE 02 | BALCONY 40
LEVELS: 04, 08, 12, 16, 20, 24, 28, 32

2 BEDROOM
TYPE 03



TYPE 03 | BALCONY 46
LEVELS: 18, 22, 26, 30



2 BEDROOM

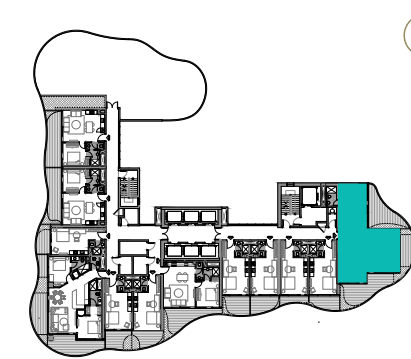
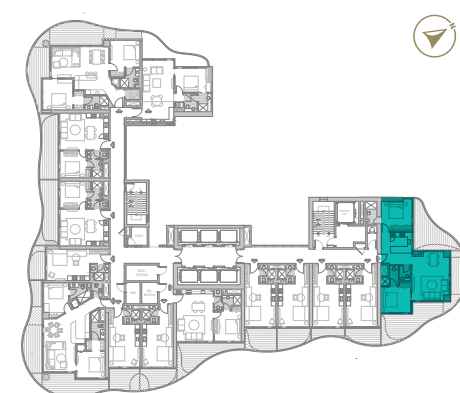
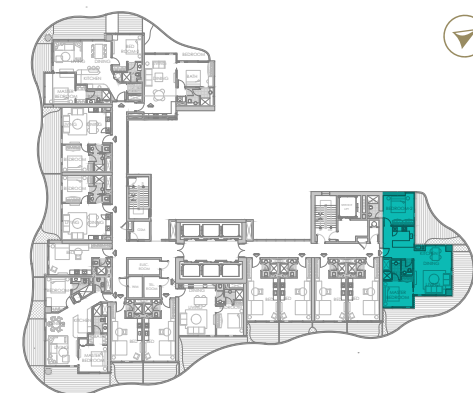
TYPE 03



TYPE 03 | BALCONY 47
LEVELS: 17, 19, 21, 23, 25, 27, 29, 31



TYPE 03 | BALCONY 48
LEVELS: 20, 24, 28, 32



DAMAC PROPERTIES

LIVE THE LUXURY

DAMAC Properties has been at the forefront of the Middle East's luxury real estate market since 2002, delivering award-winning residential, commercial and leisure properties across the region and around the world, including the UAE, Saudi Arabia, Qatar, Jordan, Lebanon, Iraq, Maldives, Canada, United States and United Kingdom. Since then, the company has delivered approximately 47,000 homes, with a development portfolio of more than 33,000 at various stages of planning and progress.*

Joining forces with some of the world's most eminent fashion and lifestyle brands, DAMAC has brought new and exciting living concepts to the market with collaborations that include a golf course managed by The Trump Organization, and luxury homes in association with Versace, de GRISOGONO, Cavalli, Just Cavalli, Paramount Hotels & Resorts, Rotana and the Radisson Hotel Group. With a consistent vision and strong momentum, DAMAC Properties is building the next generation of Middle Eastern luxury living.

DAMAC places a great emphasis on philanthropy and corporate social responsibility. The Hussain Sajwani – DAMAC Foundation (HSDF), a joint initiative between DAMAC Group and Hussain Sajwani, announced the launch of the 'Fresh Slate' initiative in collaboration with the Dubai Police General Headquarters, aimed at aiding detainees in Dubai's Punitive and Correctional Institutions who have been charged with petty offences.

The HSDF also pledged AED 5 million for the 1 Billion Meals initiative launched by Vice President and Prime Minister of the UAE, and Ruler of Dubai, His Highness Sheikh Mohammed bin Rashid Al Maktoum, at the start of Ramadan 2022, aimed at providing meals to underprivileged communities in 50 countries across the world.

DAMAC has also supported the vision of Sheikh Mohammed to train one million Arab coders in creating an empowered society through learning and skills development, an initiative that successfully wrapped up in May 2022.

*As of 31th December 2023.

LUXURY BY APPOINTMENT

CONTACT US AT ANY OF OUR OFFICES OR VISIT [DAMACPROPERTIES.COM](https://damacproperties.com)

UNITED ARAB EMIRATES

Dubai
Tel: 800-DAMAC (800-32622)
E-mail: dubai@damacgroup.com

Park Towers – Sales Centre
Dubai International Financial Centre

AYKON City – Sales Centre
Floor 63, Sheikh Zayed Road

DAMAC Hills – Sales Centre
Golf Veduta, Townhouse TH2

DAMAC Hills – Sales Centre
Bellavista (Carson Building)

DAMAC Hills 2 – Sales Centre
Amazonia Cluster, Villa 333

DAMAC Hills 2 – Sales Centre
Water Town

QATAR

Building 90, New Solta Area
Ali bin Abi Talib Street
Next to Omar bin Al Khattab
Health Centre
Tel: +974 44 666 986
Fax: +974 44 554 576
E-mail: doha@damacgroup.com

KINGDOM OF SAUDI ARABIA

DAMAC Towers Riyadh
South Tower
Olaya District
King Fahd Road
PO Box 102460
Tel: +966 11 835 0300
E-mail: ksa@damacgroup.com

TURKEY

Levazım, Mah. Koru Sk.
Zorlu Centre No. 2
IC Kapi No. 347, Beşiktaş/İstanbul
Turkey
Tel: +90 212 892 0327
Fax: +90 212 890 7184
E-mail: turkey.office@damacgroup.com

LEBANON

Unit 1801, 18th Floor
DAMAC Tower
Omar Daouk Street
Mina El Hosn, Beirut Central District
Tel: +961 81 647 200
E-mail: beirut@damacgroup.com

UNITED KINGDOM

DAMAC Tower
63-71 Bondway London SW8 1SQ
Tel: +44 (0) 207 590 8050
damactower.co.uk

CHINA

Beijing DAMAC Office Address
East Tower
No.1 East Middle 3rd Road
Beijing 100020
4th Floor
Unit 03

Shanghai DAMAC Office Address
3 Corporate Avenue
168 Hubin Road, Huangpu District
Shanghai 25F
25th Floor
Units 2510-2511

SINGAPORE

Asia Square Tower 1
Marina View, Marina Bay
Singapore 018960
11th Floor
Unit 11-06

The background is an abstract, fluid pattern of teal and blue colors, resembling liquid or smoke. The colors transition from a light, pale teal to a deeper, more saturated blue. The lines are smooth and curved, creating a sense of movement and depth. In the center of the image, the word "DAMAC" is written in a white, italicized, sans-serif font.

DAMAC